

# AIM SOLUTIONS GROUP

## Corporate Profile

[www.asgb.com.my](http://www.asgb.com.my)



# OUR GROUP

**AIM Solutions Group Berhad (ASGB)** was founded with a vision to revolutionize conventional business practices. From our very inception, we have continuously evolved, broadening our capabilities and solutions. This evolution has enabled the digitalization of manual processes, ushering in a new era of heightened precision, convenience, and security. Our strategic positioning places us at the forefront of innovation in two core business verticals: **Digital Services and Systems Engineering**.

AIM Solutions Group Berhad offers an extensive array of services, spanning the entire spectrum of system design and consultancy, software and application development, project management and implementation, as well as control and monitoring, coupled with dedicated support and maintenance for all our solutions.

Our expertise has been meticulously cultivated, and we proudly showcase it through our innovative approach. This approach is centered on delivering precisely tailored integrated solutions that empower our clients to achieve their business and operational objectives. Additionally, we extend our commitment by providing comprehensive on-site management, technical expertise, and installation services, ensuring a holistic and seamless experience for our valued customers



# OUR GROUP OF COMPANIES



**AIM** SOLUTIONS



**AIM** INNOVATIONS



**AIM** ANALYTICS



**AIM** CONNECTIONS

# OUR OBJECTIVE, VISION & MISSION



## OBJECTIVE

*To boost shareholder value by establishing a high-growth and sustainable organization.*



## VISION

*Digitize sustainability vision refers to the innovation of applications to support a sustainable digital transformation in a long-lasting, green & organic way*



## MISSION

*To become "Digital Enablers" to facilitate the process of a strong digital ecosystem to foster sustainable digitalization*

# CERTIFICATES & AWARDS



## ISO CERTIFICATION (AIM SOLUTIONS)





# OUR BUSINESSES

## DIGITAL SERVICES



### Digital Delivery Services

- SuperApp Solution
- Integrated Management System
- Self Service Terminal



### System Integration

- Application Development
- End User Peripheral
- Data Centre Solution



### Financial Technologies

- Cashless Micro Credit Collection System (CMCCS)
- Credit Financial Information System (CREFIS)
- AIMS PAY

## SYSTEMS ENGINEERING



### Extra Low Voltage (ELV) Solutions

- Safety and Security System
- Public Information System
- Building Management System



### Telecommunication Solutions

- Digital Transmission Network
- Wireless Solution
- Fibre Optic and Structured Cabling Solution



### Internet of Things

- Cloud Internet Remote Real-Time Unified SCADA (CIRRUS)
- Micro Remote Terminal Unit (NANOLOG)
- Landslide Detection (KINOMETRY)

# DIGITAL SERVICES

At ASGB, we have the scale and expertise to create complete solutions for your organization. From frontend consulting and planning to integrating and even managing your technology solutions, we have the experience to respond to your unique challenges.

Our Digital Services consist of Digital Delivery Services, Systems Integration, & Financial Technologies

# DIGITAL SERVICES

- Our mobile applications are currently serving over 400,000 micro-entrepreneurs, over 200,000 teachers, and 10,000 foreign workers.
- Our Credit Financial Information System (CREFIS) is currently disbursing over MYR 2 billion micro financing
- Our Cashless Micro Credit Collections System (CMCCS) is currently processing over 10 million transactions annually with value of over MYR 1 billion
- We have over 5000 terminals deployed nationwide for repayments, bill payments and prepaid reloads.





# DIGITAL DELIVERY SERVICES

## SUPERAPP SOLUTION

Super App is a mobile application designed and developed for small to large-scale membership environments such as Cooperatives, Organizations & Unions.

A two-way communication platform between Operators and Users to further improve the quality-of-service delivery through digital elements



## INTEGRATED MANAGEMENT SYSTEM

Our INTEGRATED MANAGEMENT SYSTEM (IMS) combines various management system into a single, overall comprehensive and harmonized management system.

IMS generally has 9 important modules require by the corporative and union which include membership management, finance and etc.

- |   |   |   |   |
|---|---|---|---|
| 1 | <b>Web Application – Membership Management</b><br>Register membership, multi level approval, view, update and search members' information, manage shares & dividend | 6 | <b>Web Application – Tabung Kebajikan Management</b><br>Application and approval for welfare funds  |
| 2 | <b>Web Application – Accounting</b><br>Account payable, receivable, Chart of Account, basic financial report, settings  | 7 | <b>Web Application – Reporting</b><br>2 basic reports will be developed for each module   |
| 3 | <b>Web Application – Financing</b><br>Product registration, Application, Approval, Disbursement, Collection, Credit Control   | 8 | <b>Web Application – System Administration</b><br>Manage user access and role, reset password, configure application, manage members access |
| 4 | <b>Web Application – Asset Management</b><br>Procurement, record asset, record asset depreciation value, asset tagging, asset borrow                                | 9 | <b>Mobile Application – Membership Management</b><br>Update profile, notification/news/campaign, download statement, view shares & dividend |
| 5 | <b>Web Application – Human Resource Management</b><br>Salary, update staff info, leave management, training   |   |   |

## SELF SERVICE TERMINAL

Our Self Service Terminal Solution uses a payment gateway that allows clients to perform payments for various services in interactive mode. It is a blend of the most modern technologies providing customers with functionality for seamless integration.

It is designed to be flexible, extensible and capable of integrating any services, such as utility or banking services, as well as specialized government services



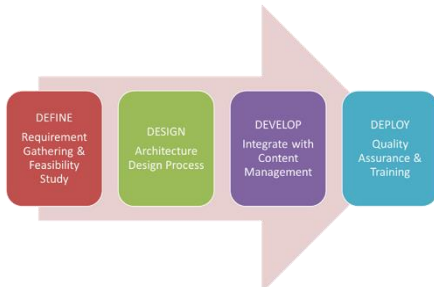
# SYSTEM INTEGRATION

## APPLICATION DEVELOPMENT

A modern, well-presented, dynamic and mobility system, application and portal is now expected for most businesses and organizations.

By refining the process into 4 systematic phases, ASGB have reduced the production time frame and minimized the development cost involved in creating advanced system, application, website

and portal in online and mobility platform.



## END USER PERIPHERALS

ASGB is able to help you identify the best devices to power your business and also determine which ones form the best cohesive whole together.

Management of end-user peripherals includes installing and updating operating systems and application & patches, reporting & maintenance.



## DATA CENTRE SOLUTION

Our certified Data Center Architects and Design team, are experienced in all aspects of Data Centre (DC) and Disaster Recovery Centre (DRC).

Our solutions also include crucial areas for DC & DRC business continuity, which includes redundant/backup components and infrastructure for power supply, data communication connections, and environmental control e.g., air conditioning, fire suppression and various security devices



# FINANCIAL TECHNOLOGIES

## CASHLESS MICRO CREDIT COLLECTION SYSTEM (CMCCS)

CMCCS is a platform of revenue collection that is efficient in the payment collection process. Besides reducing human errors and potential leakages, CMCCS can shift & cultivate an e-payment mindset to replace cash-centric behavior amongst microcredit borrowers.

A centralized collection system, equipped with a web portal for management use, operation monitoring and tracking & reporting for each transaction. CMCCS is also available on a mobile app.



## CREDIT FINANCIAL INFORMATION SYSTEM (CREFIS)

CREFIS is a micro-credit solution built based on the actual operational processes.

CREFIS provides organizations with the full suite of applications to manage daily operations from customer loan applications to settlement, financial systems, insurance systems, customer relations and other administrative functions. CREFIS also embeds analytics tools to analyze data for data mining purposes and census reporting.

CREFIS has 13 complete modules

- |  |  |
|--|--|
| 1. Borrowers Module                        | 2. Entrepreneur Management & Training  |
| 3. Integration Management And Data Sharing | 4. User Management                     |
| 5. Branch Management                       | 6. Financing                           |
| 8. Collection                              | 7. Monitoring                          |
| 9. Reporting                               | 10. Interface Display                  |
| 11. Dashboard                              | 12. System's Administration Management |
| 13. System's Document Management           |  |

## AIMS PAY

AIMS Pay is a multi-payment channel solution that enables payment via physical & online payment gateway that provides users with all the flexibility for electronic payment and collections.

Designed for billers, merchants and users from various sectors and industries to enable multiple platform transactions using credit & debit cards, MyDebit, Direct Debit (FPX) and cash.



# OUR KEY REFERENCES

## (DIGITAL SERVICES)

No.	PROJECT TITLE	CLIENT
1.	BUILD, OPERATE AND MANAGE OF CASHLESS MICRO-CREDIT COLLECTIONS SYSTEM (CMCCS) FOR AMANAH IKHTIAR MALAYSIA	AMANAH IKHTIAR MALAYSIA
2.	PERKHIDMATAN MENYELENGGARA SERTA MENYEDIAKAN PERKHIDMATAN SOKONGAN BAGI PERALATAN ICT DAN INFRASTRUKTUR PUSAT DATA SECARA KOMPREHENSIF BAGI UNIT PEMODENAN TADBIRAN DAN PERANCANGAN PENGURUSAN MALAYSIA (MAMPU)	MAMPU
3.	MEMBEKAL, MENGHANTAR, MEREKA BENTUK, MEMBANGUN, MEMASANG, MENGUJI, MENTAULIAH DAN MENYELENGGARA PERISIAN, PERKAKASAN SERTA APLIKASI BAGI HASIL POWER DATA FASA 2 DI LEMBAGA HASIL DALAM NEGERI MALAYSIA	LEMBAGA HASIL DALAM NEGERI MALAYSIA
4.	PERKHIDMATAN PENYENGGARAAN PERALATAN ICT DI SEKOLAH-SEKOLAH DI BAWAH KEMENTERIAN PENDIDIKAN MALAYSIA (KPM) ZON 3: PERLIS, KEDAH DAN KELANTAN	KEMENTERIAN PENDIDIKAN MALAYSIA
5.	PEMBEKALAN, PENGHANTARAN, PEMASANGAN, PENGUJIAN DAN PENTAULIAHAN PERALATAN ICT BAGI PENAIKTARAFAN PERALATAN SISTEM PENYAMPAIAN DI JABATAN IMIGRESEN MALAYSIA (JIM)	JABATAN IMIGRESEN MALAYSIA
6.	SUPPLY, DELIVERY, INSTALLATION, TESTING, COMMISSIONING, TRAINING AND SUPPORT SERVICES FOR REVIVING DATA CENTRE IN MALAYSIAN COMMUNICATION AND MULTIMEDIA COMMISSION (MCMC) HQ	SURUHANJAYA KOMUNIKASI DAN MULTIMEDIA MALAYSIA
7.	INTEGRATION OF MANAGEMENT AND MOBILITY APPLICATION PLATFORM TO IMPROVE DIGITAL SERVICES FOR NATIONAL UNION OF THE TEACHING PROFESSION MALAYSIA (MYNUTP)	NUTP
8.	DEVELOPMENT OF WATER RESOURCE ABSTRACTION LICENSING INFORMATION SYSTEM (SPASA) 2, NOTICE AND COMPOUND FOR SELANGOR WATER MANAGEMENT BOARD	LEMBAGA URUS AIR SELANGOR (LUAS)
9.	DKOOP SYSTEM – MONITORING SYSTEM COOPBANKS AND CREDITS COOPERATIVES FOR MALAYSIAS COOPERATIVE COMMISSION	SURUHANJAYA KOPERASI MALAYSIA

Our Systems Engineering solutions comprise the design, supply, integration, installation, testing and maintenance of ICT systems on a turnkey basis.

Through experience in management and technical area, we collaborate with your business and technology leadership team to implement the system and application that will deliver positive results to your business.

At ASGB, we have the scale and expertise to create complete solutions for your organization. From front-end consulting and planning to integrating and even managing your technology solutions, we have the experience to respond to your unique challenges.

# SYSTEMS ENGINEERING



# SYSTEMS ENGINEERING



## PUBLIC INFRASTRUCTURES

- Railway
- Airport
- Highway
- Irrigation and Drainage



## TELECOMMUNICATION

- Telekom
- Allo
- Maxis
- Time
- PR1MA



## INDUSTRIAL

- Factory
- Manufacturing Plant
- Warehouse
- Office



# EXTRA LOW VOLTAGE SYSTEM

## PASSENGER INFORMATION SYSTEM

Passenger Information System (PIS) is conceived to enhance travel experience by providing a wide array of information (both audio & visual) catering to all walks of transit passengers.

Our PIS is extensively customizable to interface with various systems and to various front-end designs based on the most comprehensive set of customer needs.



## BUILDING MANAGEMENT SYSTEM

Our Building Management System (BMS) is a sophisticated computer-based control system that manages and monitors a building's mechanical, electrical, and electromechanical systems to ensure their efficient operation and optimal performance.

Our BMS are commonly used in commercial, industrial, and institutional buildings, as well as large residential complexes.



## SAFETY & SECURITY SYSTEM

ASGB is experienced in delivering advanced and a complete security and access control system which include a CCTV System, Card Access System, Secured access control gates and barriers and state of arts parameter fencing solutions.

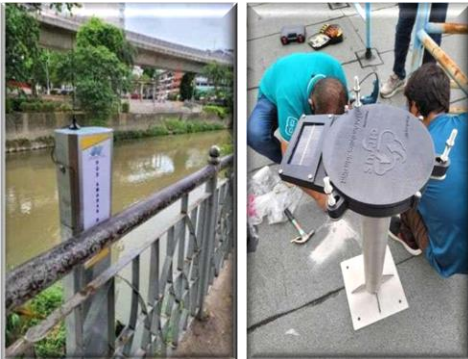


# INTERNET OF THINGS

## NANOLOG RF (Micro Remote Terminal Unit)

Can be retrofitted easily below the rain gauge to provide real-time rainfall data measurement & warning

Monitor the rainfall sensor in real time, store data in the onboard memory and report live rainfall reading to the CIRRUS Cloud.



## CIRRUS (Cloud In Remote Real-Time Unified SCADA)

Backend cloud-based SCADA System which data from POD

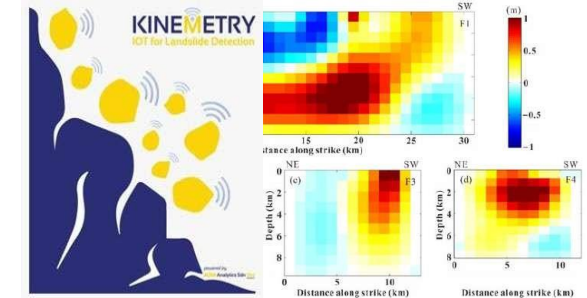
Reduce the cost of devices, power requirements, equipment footprint and communication



## KINEMETRY (MicroRTU Detection)

Landslide detection capabilities.

The Seismic Sensor monitors the Seismic activity in real-time, stores data in the onboard memory, and sends reports/data to the CIRRUS Cloud.



# TELECOMMUNICATION SYSTEMS

## FIBRE OPTIC & STRUCTURED CABLING SOLUTION

ASGB specializes in the highest quality installation of all forms of certified voice and data cabling including Category 5e, Category 6, fibre-optic, buried, aerial and wireless networks. Our Services include:

Fiber to Home/Premises/Businesses (FTTH/FTTP/FTTB)  
Outside Plant (OSP)  
Structured Cabling / Fiber Network Design & Cabling



## DIGITAL TRANSMISSION NETWORK

ASGB is experienced in delivering advanced and complete Backbone Transmission Network BTN solutions, Local Access networks and Public WiFi solutions for various clients. Our solutions include:

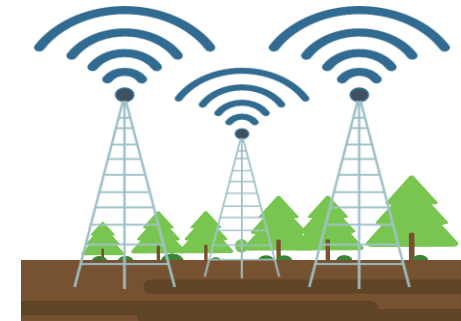
Backbone network deployment  
LAN and WAN deployment  
SDWAN Solution  
Backhaul Solution



## WIRELESS SOLUTION

At ASGB, we specialize in customized wireless solutions that meet our client's unique needs and requirements. Our wireless solutions include:

Wi-Fi networks.  
Cellular networks



# OUR KEY REFERENCES

## (SYSTEMS ENGINEERING)

NO	PROJECT TITLE	CLIENT
1	DELIVERY, SUPPLY, INSTALLATION, TESTING AND COMMISSIONING OF COMMUNICATION SYSTEM of DTN, PIS & PA SYSTEM FOR GEMAS JOHOR BAHRU DOUBLE TRACK	Willowglen/KTMB
2	DESIGN, CONSTRUCTION, SUPPLY,INSTALLATION, TESTING, COMMISSIONING, AND MAINTENANCE OF KTMB DEPOT AND STATION AT TUMPAT FOR COMMUNICATION SYSTEM WORK	Pembinaan MALS
3	SUPPLY, INTALL, TESTING AND COMMISSIONING KTMB ABDULLAH HUKUM STATION COMMUNICATION EQUIPMENT (PIS,CCTV, MCS) AND NETWORK INTEGRATION	SP SETIA
4	PIS INTEGRATION HITACHI (Formerly known as ANSALDO)	HITACHI
5	DESIGN, SUPPLY, INSTALLATION, TESTING AND COMMISSIONING AND MAINTENANCE OF PASSENGER INFORMATION DISPLAY SYSTEM FOR KTMB KAJANG 2 STATION	MKH
6	CONSTRUCTION AND COMPLETION OF PASAR SENI PAID LINK AND OTHER ASSOCIATED WORKS BETWEEN EXISTING PASAR SENI LRT STATION KUALA LUMPUR	TRC / MRT
7	TRX PLOT/NETWORK INSTRUMENTS INFRA WORKS ("SUB-CONTRACT WORKS")	WCT
8	PROJEK PEMBESARAN DAN MENAIKTARAF LAPANGAN TERBANG SULTAIN ISMAIL PETRA, KOTA BHARU, KELANTAN - SUPPLY, DELIVER, INSTALL, TESTING AND COMMISSIONING OF EXTRA LOW VOLTAGE (ELV) AND INFORMATION COMMUNICATIONS TECHNOLOGY (ICT) SERVICES	WCT
9	DELIVERY, SUPPLY, INSTALLATION, TESTING AND COMMISSIONING OF FIBER OPTIC CABLE CONNECTION AND IP NETWORK FROM EXISTING OCCs TO THE INTEGRATED CONTROL CENTER ( ICC) IN CHERAS	INDRA / PRASARANA
10	SUPPLY, INSTALL, TESTING AND COMMISSIONING OF ELV SYSTEMS FOR DUTCH LADY NEW PLANT	MIE
11	DESIGN , SUPPLY, INSTALLATION, TESTING AND COMMISSIONING AND MAINTENANCE OF ELV SYSTEMS FOR BAGGAGE HANDLING SYSTEM AT KLIA	T7
12	DESIGN, SUPPLY, INSTALL, TESTING AND COMMISSIONING OF CCTV, PIDS, GIGABIT NETWORK FOR RIDT, KVDT AND SGGT	KTMB
13	INTEGRATION SERVICES IN KAJANG STATION (STN 035) BETWEEN KTMB AND KVMRT AND TO SUPPLY, DELIVER AND INSTALL ALL EQUIPMENT IN KAJANG STATION KTMB SHARED CONCOURSE ("WORKS")	MMC GAMUDA



# OUR CLIENTS



# CONTACT US

**Email:** [info@asgb.com.my](mailto:info@asgb.com.my)  
**Phone:** +603-6273 3386  
**Fax:** +603 6273 3387  
**Toll Free:** +1800-88-3386

**Address:**  
Mezzanine Floor, Menara AIM Annex  
No.3 Jalan Cempaka SD 12/1A Bandar  
Sri Damansara PJU9  
52200 Kuala Lumpur

